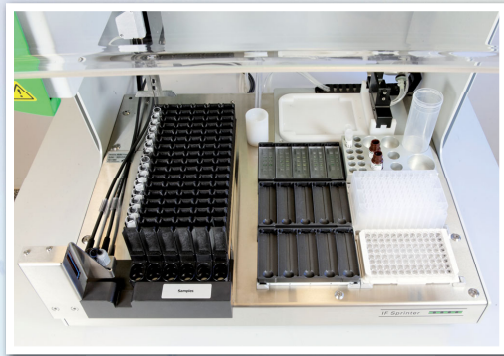




# The IF Sprinter

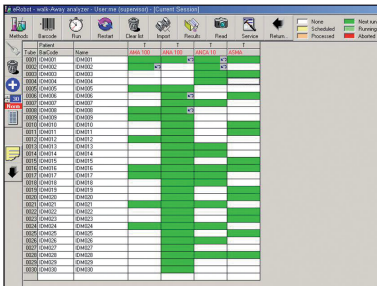
Quick automated processing for reliable IFT results



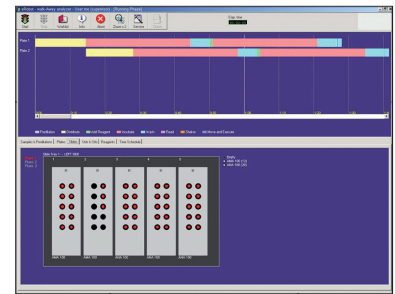
- **Safe and convenient:** Fully automated processing of immunofluorescence tests, from the dilution and dispensing of samples to the incubation and washing of microscope slides.
- **User-friendly:** Sample identification by automatic scanning of barcodes when racks are inserted into the system.
- **Quick and reliable results:** The washing of slides by flooding ensures short processing times and clear immunofluorescence signals.
- **Smooth laboratory routine:** The connection to EUROLabOffice (optional) offers unique ways to optimise processes in serology, e.g. automatic generation of worklists.



The **IF Sprinter** from EUROIMMUN is an automated solution for the processing of indirect immunofluorescence tests.



The automated system is designed for the identification, dilution and transfer of samples and the incubation and washing of microscope slides. The IF Sprinter is designed for laboratories with medium throughput.



## TECHNICAL DATA

### System

- Sample capacity 96 positions (tube diameter 10-13 mm)
- Sample identification Via barcode (read automatically when racks are inserted)
- Reagent positions 12 controls and 8 reagents in racks specifically designed for EUROIMMUN reagents
- Slides Up to 20 (depending on the system configuration)
- Dilution positions 192 (Deepwell and/or microtiter plate)

### Pipetting unit

- Needle system 1 washable needle
- Liquid level detection Sensitivity 200 µl (NaCl solution in 16 mm tubes)
- Clot detection Yes (capacity determination)
- Carry-over Approx.  $10^{-6}$  (depending on the wash cycles and reagent characteristics)
- Volume 5-1000 µl
- Accuracy CV < 1% (> 20 µl); 2% (10 µl)

### Washer

- Washing method Flooding of slides in tray with 5 positions
- Wash head 8-fold, software allows you to choose from 4 different buffers

### Software and system requirements

- Operating software Microsoft Windows XP or 7
- Hardware Dual core processor with 1.6GHz or more, 1 GB RAM, 15" monitor (> 1280 x 1024)
- Connections CAN-Bus on USB
- Bidirect. communication ASCII, XML or HL7

### Dimensions

- Width x Depth x Height 65 cm x 70 cm x 75 cm
- Weight Approx. 50 kg

### Power supply

110-240 V, 500 VA, 50/60 Hz