

## Certificate of Performance

### Fluoride 1

Product Code KR131

Date 25.06.2020

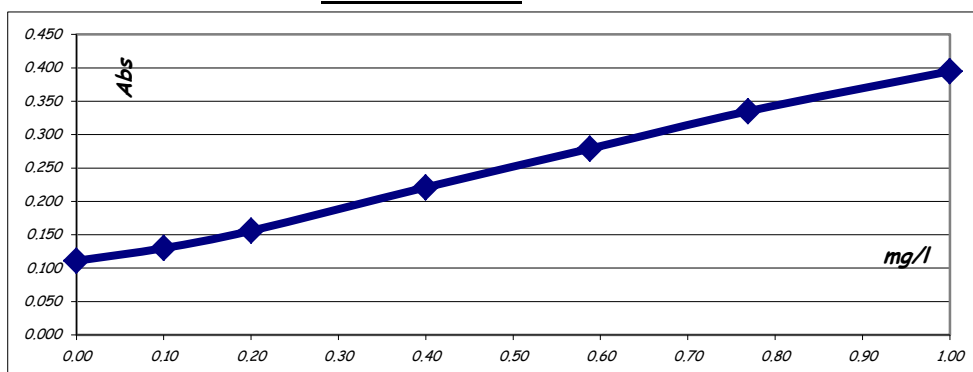
Expiry Date 24.06.2021

Reagent	Lot Number
Fluoride 1	<b>4428</b>
Fluoride 2	4429
Fluoride 3	4430
Test Method	WC SOP 28
Test Instrument	Gallery Plus
Serial Number	86210011026700

Std. Value	Lot #	Abs.
0.00		0.111
0.10	Fluor 100 02 20	0.130
0.20	Fluor 100 02 20	0.156
0.40	Fluor 100 02 20	0.221
0.59	Fluor 100 02 20	0.279
0.77	Fluor 100 02 20	0.335
1.00	Fluor 100 02 20	0.395


### Calibration Curve

\*serial dilution



Test	Result	Specification	Pass / Fail
Intercept	0.111	0.1 to 0.116	Pass
Sensitivity	Abs/ppm		
0 - 0.100 ppm	0.190	0.150 to 0.250	Pass
0.100 - 0.200 ppm	0.260	0.250 to 0.350	Pass
0.200 - 0.400 ppm	0.325	0.300 to 0.350	Pass
0.400 - 0.588 ppm	0.309	0.300 to 0.350	Pass
0.588 - 0.769 ppm	0.309	0.280 to 0.320	Pass
0.769 - 1.000 ppm	0.260	0.220 to 0.280	Pass

**Notes** Store between 2 & 8 °C  
 \*Stable on Board Fluoride 1,2 & 3 5days  
 Keep Tightly Sealed when not in use.  
 Do not return unused portions to container  
 Barcode ID- Fluoride 1 131; Fluoride 2 132; Fluoride 3 133  
 \* Based on results obtained in our Research Facility

  
 A. Coonerty

**An ISO 9001: 2008 Registered Company**  
 Annacotty Susinness Park, Annacotty, Limerick, Ireland  
 Telephone 061 358190 Facsimile 061 358 191

Labelling according to Regulation (EC) No 1272/2008